

SOCIAL ENGLISH - TALKING ABOUT YOURSELF 02 ASKING ABOUT PLACES 00

IN CONTEXT 5 - 8 min



Look at the pictures and answer the questions.

Where are they?

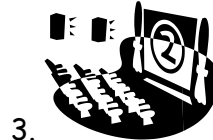
in an office
in a museum
in a store
in a park
in a church

Where are you?

at work
at home
at a friend's home
at a restaurant
at a movie theater

What is it?

Office, home, garden, store, church, beach, castle, movie theater, monument,



Observe & answer the questions

in = inside an area



at = a point on a map



a map



Is he at home?

Yes, he is.



Is he in the museum?

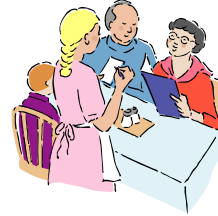
No, he isn't



Is she at a movie theater?



Is he in a church?



Are they at a restaurant?



Is she at a friend's home?



Is he in the office?



Are they in the park?

Is your colleague at work?

Are you in a conference-room?

ASKING QUESTIONS 12 - 15 min

Read the questions & choose the correct answer.

Example (in green): Am I at the store? No, I am not.

Yes- no questions with be

Questions

1. **Am** → I at the store?
2. **Are** you at the airport?
3. **Is** he in a museum?
4. **Is** + she at work?
5. **Is** it in the street?
6. **Are** we in a cathedral?
7. **Are** they at home?

Short answers

- I am
you are
he is.
Yes, she is.
it is.
we are.
they are.
- I am not**
you are not
he is not.
No, she isn't.*
it is not.
we are not.
they aren't.*

*Only use contractions in negative short answers (No, it isn't.) EXCEPT at the first person singular.

You can also use the contractions of the conjugated verb to be in negative or positive sentences (He isn't French. - They're in Mexico.)

Match the questions and answers

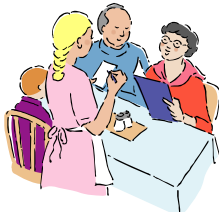
1. Are people in the streets?
2. Is your friend at home?
3. Am I in a medieval cathedral?
4. Is Carol at home?
5. Are you & your family at the restaurant?

- A. No, we aren't
- B. Yes, she is.
- C. No, he isn't.
- D. Yes, they are.
- F. No, you are not.

Complete



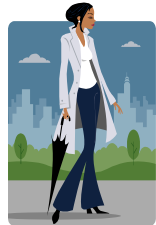
Are _____ in the office?
No, they _____



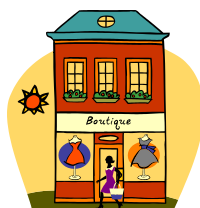
_____ she at work?
Yes, _____.



_____ in Hawaii?
No, I am not.



_____ in the store?
_____, _____



_____ a store?
_____, _____ is.



_____ we at home?
No, _____.

Complete the questions and write the answer.

Use a coma "," and a period "."

Examples: Are you and your friend at the theater? No, we are not.

1. _____ you in an apartment? No, _____.
2. _____ it in the city? Yes, _____.
3. _____ you and your instructor in a conference-room? No, _____.
4. _____ your boss in the office? Yes, _____.
5. _____ your colleagues with you? Yes, _____.
6. _____ Seoul in Japan? No, _____.
7. _____ I at church? No, _____.

WRITING 5-8 min

Write 3 yes-no questions. Use the words:

am - in - Moscow, Russia - you - I - is - my teacher - at - home - Time Square - the
museum - airport - office - it - work - are

- 1.
- 2.
- 3.

Listen to your instructor answer.



You are lost in Florence, Italy.

Ask your instructor yes-no questions to find the monument where you are at. (your teacher selects one place on the map.)

FLORENCE, ITALY



Places & Monuments

Dome

Football field / Stadium

Palace

Basilica Ste Mary of the Holy Spirit

Basilica of the Most Holy Annunciation

Uffizi Gallery